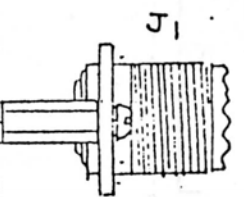
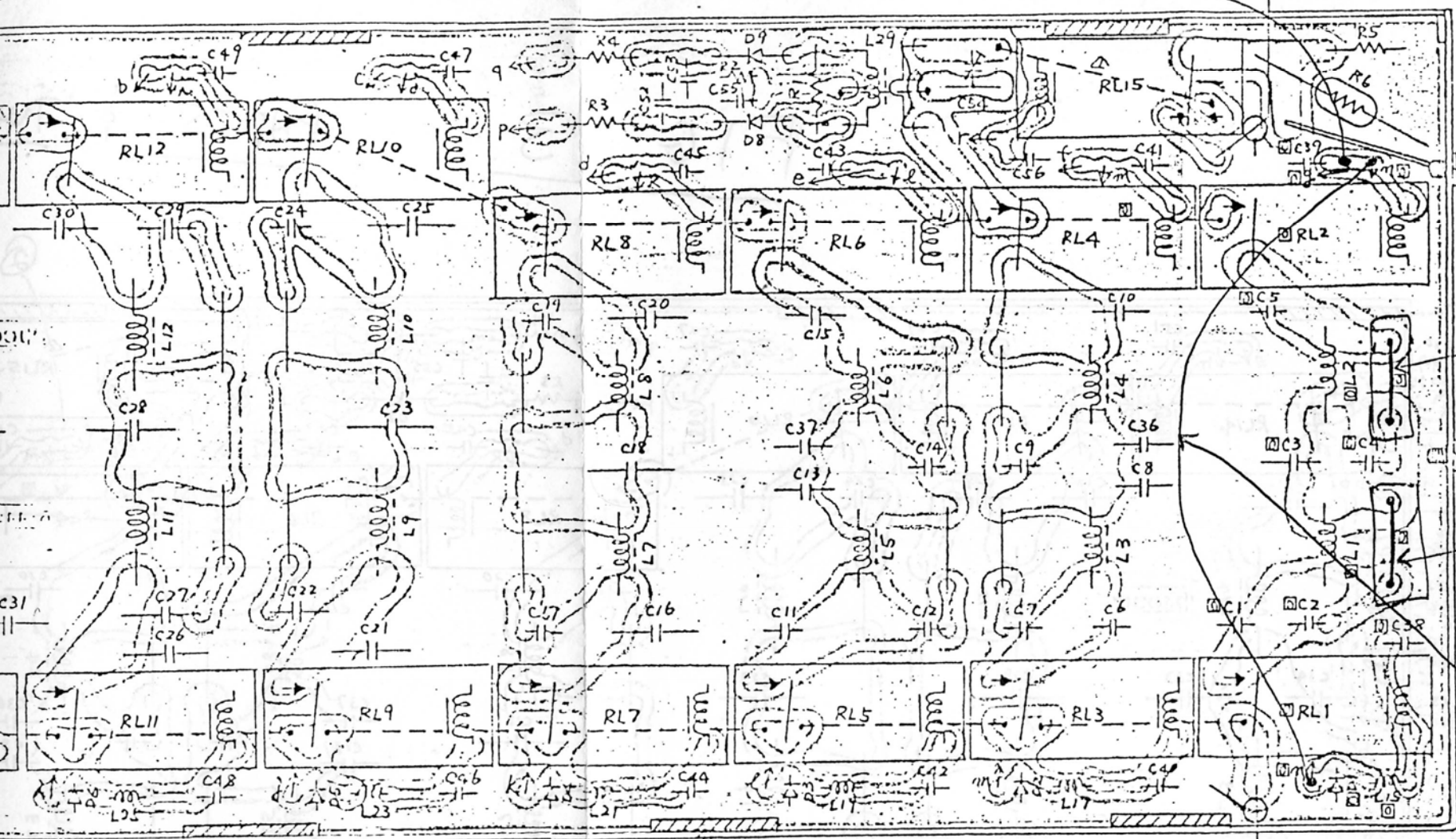


19. 2

# JUMPERS AND WIRES

WIRE 2 "g"



TWO LEAD JUMPERS ON COMPONENT SIDE OF BOARD

WIRE 1 "B"

(3.5 MHz)

(7 MHz)

(10 MHz)

(14 MHz)

(18.21 MHz)

(24.28 MHz)

75所 7109-5-2と羊田付

58.1.26  
 分室  
 株式会社